

$$h(x) = \begin{cases} \frac{x^2 - 25}{x - 5} & x \neq 5 \\ 10 & x = 5 \end{cases}$$

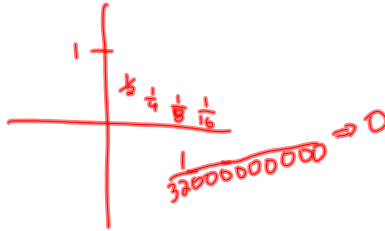
$$h(7) = \frac{7^2 - 25}{7 - 5} = \frac{49 - 25}{2} = \frac{24}{2} = 12$$

$$h(5) = 10$$

$$f(x) = \frac{15}{(x+8)(x-3)}$$

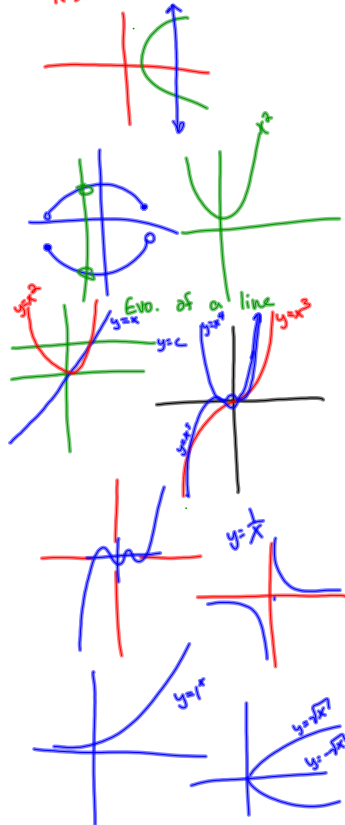
D: $\{x \mid x \in \mathbb{R}, x \neq -8, x \neq 3\}$

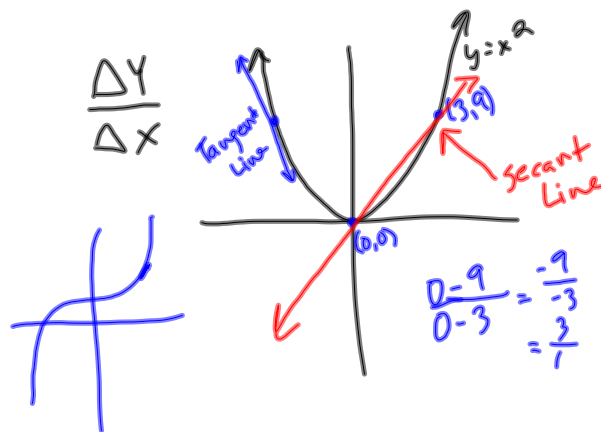
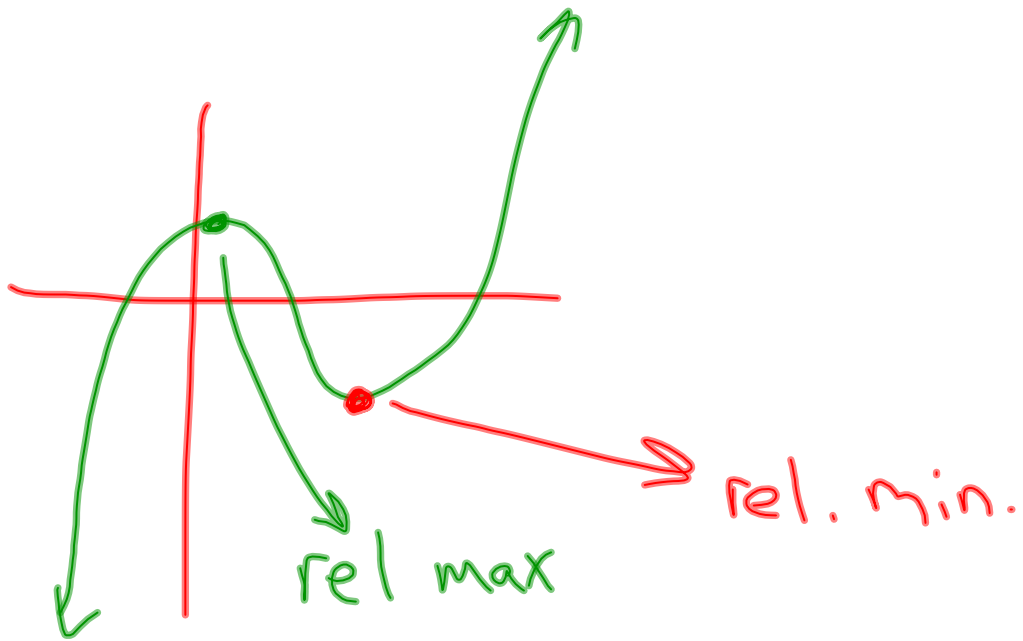
R: $\{y \mid y \in \mathbb{R}, y \neq 0\}$



Vertical Line Test:

Test for functions:





Slope = rate of Δ
 = Avg. Velocity

pg. 177 # 2, 12, 18, 20
 24, 28, 30, 34, 40, 48
 52, 56